

A. GENERAL NOTES:

1. ALL DIMENSION ARE IN MM UNLESS OR OTHERWISE SPECIFIED.
2. ALL EXTERNAL PLASTER ARE IN 18 MM TH AND INTERNAL WALL'S ARE 100 MM TH OR OTHERWISE MENTIONED.
3. ALL ELECTRICAL AND PLUMBING WORKS ARE CONSIDERED AS PER I.S. CODE.

B. STRUCTURAL NOTE:

1. ALL DIMENSION ARE IN MM UNLESS OR OTHERWISE SPECIFIED.
2. DIMENSION TO READ ONLY, NOT TO BE SCALED.
3. THIS DRAWING SHALL BE READ IN CONJUNCTION WITH RELEVANT ARCHITECTURAL DRGS.
4. FOR LOCATION OF THE BUILDING REFER ARCH. BLOCK LAYOUT PLAN.
5. F.G.L SHALL BE FIXED AT SITE AS PER SITE DECISION AND SHALL BE CONSIDERED AS (+10.00M).
6. BEARING CAPACITY OF SOIL CONSIDERED AS 8.0 MT/M².
7. GRADE OF
 - a) CONCRETE = M-25, DESIGN MIX (U.O.M)
 - b) STEEL = Fe600.
 - c) CEMENT = EQUIVALENT TO 53.
8. CLEAR COVER TO REINF
 - a) FOUNDATION AND FOUNDATION BEAM = 50MM
 - b) COLUMN = 40 MM
 - c) TIE BEAM = 30 MM
 - d) STAIR = 25 MM
 - e) SLAB TOP AND BOTTOM = 20MM AND END = 25MM
 - f) FLOOR BEAM = 25 MM
9. ANTI TERMITE TREATMENT SHALL BE DONE AS PER RELEVANT I.S. CODES.
10. 50 TH D.P.C (1:1.2) WITH WATER PROOFING ADMIXTURE SHALL BE PROVIDED AT PLINTH LEVEL OVER ALL BRICK WORK BELOW PLINTH LEVEL.
11. CHAIR SHALL BE PROVIDED BETWEEN TWO LAYERS OF SLAB REINFORCEMENT WHEREVER REQUIRED.
12. SPACE BAR OF SUITABLE DIA SHALL BE PROVIDED BETWEEN TWO LAYERS OF BEAM REINFORCEMENT WHEREVER REQUIRED.
13. ALL CONCRETE SHALL BE MIXED BY MIXER MIC AND SHALL BE COMPACTED BY MECHANICAL VIBRATOR.
14. ANY DISCREPANCY OF THE CONSULTANT PRIOR TO EXECUTION.
15. FOR ANY OTHER GUIDELINE NOT STATED IN THIS DRAWING RELEVANT I.S. CODED ARE NOT TO BE FOLLOWED.

C. AREA CALCULATION:

1. PLOT AREA - 2 NOS
CV07-187.70 SOM = 79.72 SQM
CV08-176.48 SOM = 46.05 SQM
2. GROUND FLOOR AREA = 15.92 SQM
3. FIRST FLOOR AREA = 1.85 SQM
4. OPEN TERRACE AREA (100%) = 150.07 SQM
5. JULIET BALCONY (100%) = 20.31 SQM
6. HARUSCAPE AREA = 6.0 MERTER
7. HEIGHT OF BUILDING = 1 NO.
8. CAR PARKING PROVIDED

D. SIGNATURE OF OWNER:

ALTAIPE INDIA PVT. LTD.
Affiliated Signatory
SIGNATURE OF OWNER

E. SIGNATURE OF ENGINEER:

Supriya Mondal
D.C.E.
SIGNATURE OF ENGINEER

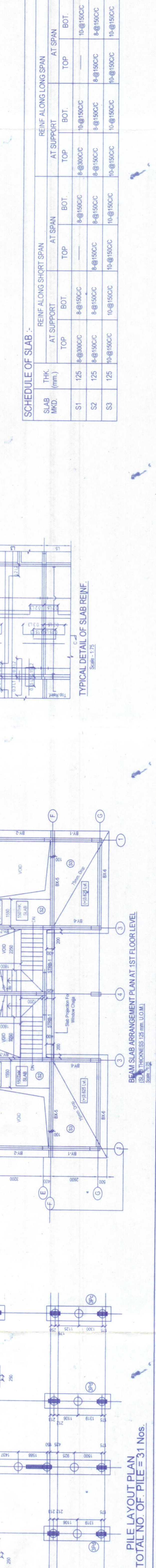
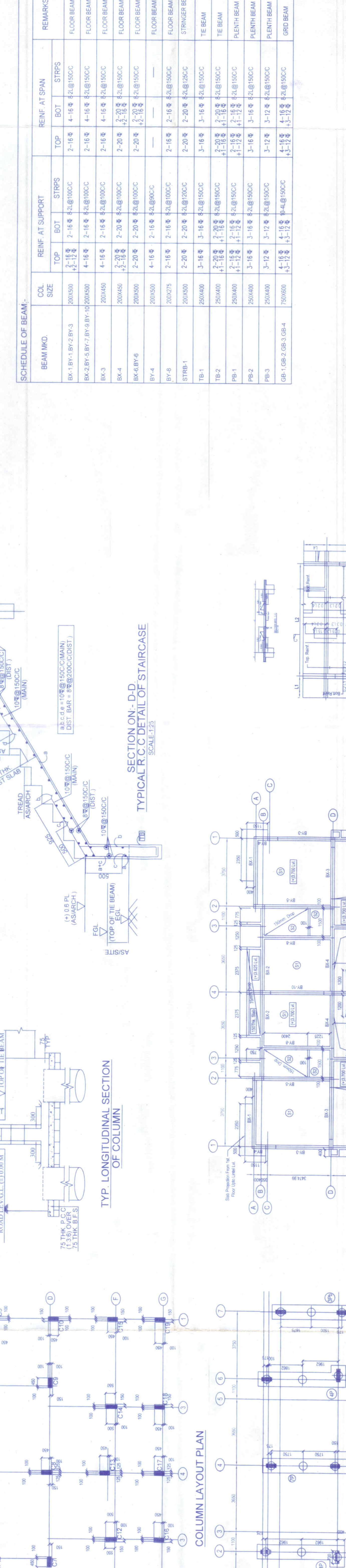
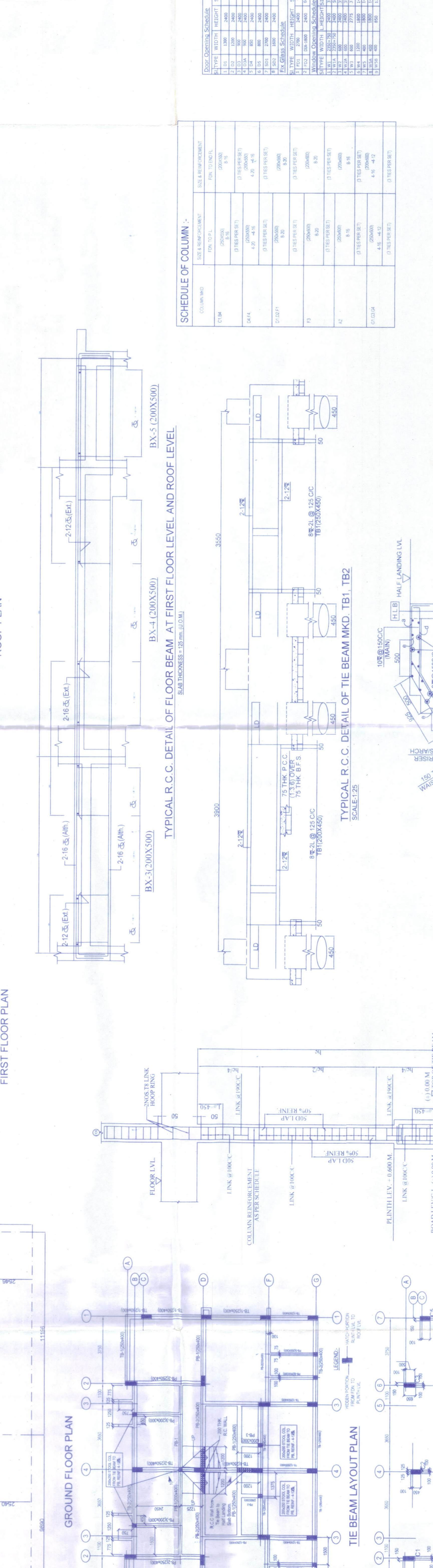
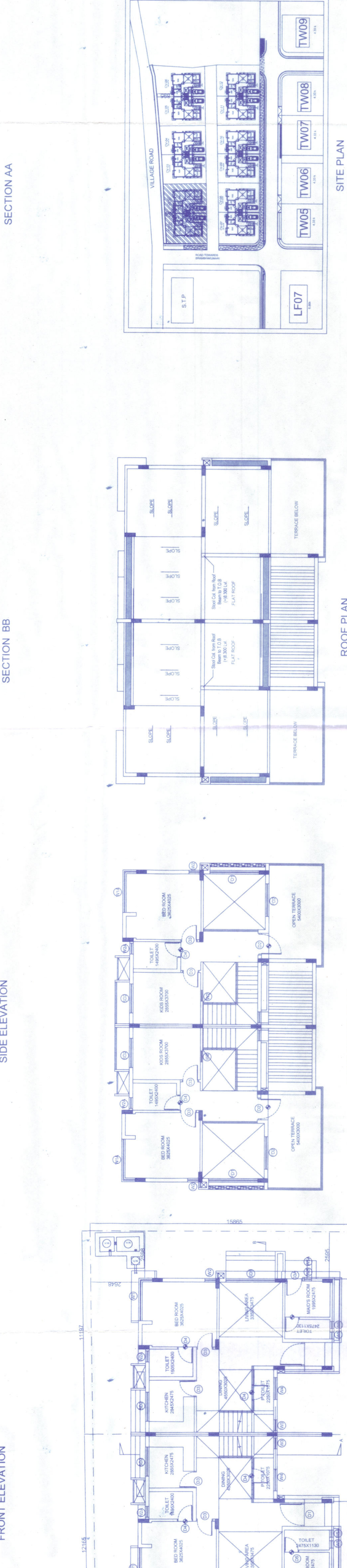
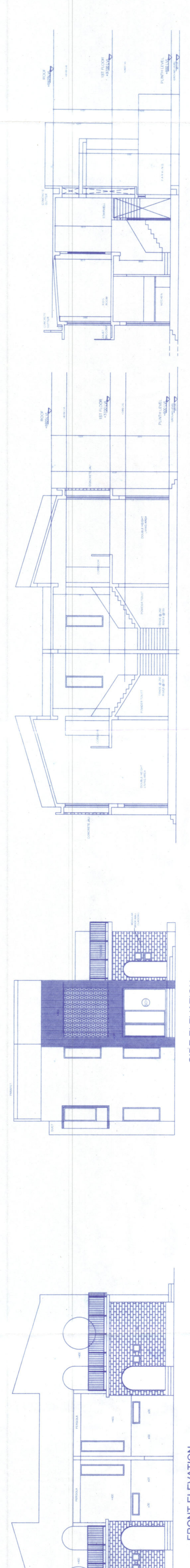
F. PROJECT:

PROPOSED TYPICAL G+1 BUNGALOW FOR RESIDENTIAL COMPLEX AT PLOT NO CV-01&02, DAG NO-1960, MOUZA - RAMKRISHNAPUR, P.S - BISHNUPUR, DIST - SOUTH 24 P.G.S. WEST BENGAL.

G. SANCTION DRAWING:

SITE PLAN, FLOOR'S PLAN, ROOF PLAN, ELEVATION, SECTION, LOCATION DETAILS OF SEPTIC TANK AND STRUCTURAL DETAILS OF PLOT NO CV-01&02.
Approved By

Stamp and signature area for sanction drawing approval, including the name of the engineer and the date.



SCHEDULE OF COLUMN

COL. NO.	COL. SIZE	REIN. AT SUPPORT	REIN. AT SPAN	REMARKS
1	200X300	4-18	4-18	FLOOR BEAM
2	200X300	4-18	4-18	FLOOR BEAM
3	200X300	4-18	4-18	FLOOR BEAM
4	200X300	4-18	4-18	FLOOR BEAM
5	200X300	4-18	4-18	FLOOR BEAM
6	200X300	4-18	4-18	FLOOR BEAM
7	200X300	4-18	4-18	FLOOR BEAM
8	200X300	4-18	4-18	FLOOR BEAM
9	200X300	4-18	4-18	FLOOR BEAM
10	200X300	4-18	4-18	FLOOR BEAM
11	200X300	4-18	4-18	FLOOR BEAM
12	200X300	4-18	4-18	FLOOR BEAM
13	200X300	4-18	4-18	FLOOR BEAM
14	200X300	4-18	4-18	FLOOR BEAM
15	200X300	4-18	4-18	FLOOR BEAM
16	200X300	4-18	4-18	FLOOR BEAM
17	200X300	4-18	4-18	FLOOR BEAM
18	200X300	4-18	4-18	FLOOR BEAM
19	200X300	4-18	4-18	FLOOR BEAM
20	200X300	4-18	4-18	FLOOR BEAM
21	200X300	4-18	4-18	FLOOR BEAM
22	200X300	4-18	4-18	FLOOR BEAM
23	200X300	4-18	4-18	FLOOR BEAM
24	200X300	4-18	4-18	FLOOR BEAM
25	200X300	4-18	4-18	FLOOR BEAM
26	200X300	4-18	4-18	FLOOR BEAM
27	200X300	4-18	4-18	FLOOR BEAM
28	200X300	4-18	4-18	FLOOR BEAM
29	200X300	4-18	4-18	FLOOR BEAM
30	200X300	4-18	4-18	FLOOR BEAM
31	200X300	4-18	4-18	FLOOR BEAM
32	200X300	4-18	4-18	FLOOR BEAM
33	200X300	4-18	4-18	FLOOR BEAM
34	200X300	4-18	4-18	FLOOR BEAM
35	200X300	4-18	4-18	FLOOR BEAM
36	200X300	4-18	4-18	FLOOR BEAM
37	200X300	4-18	4-18	FLOOR BEAM
38	200X300	4-18	4-18	FLOOR BEAM
39	200X300	4-18	4-18	FLOOR BEAM
40	200X300	4-18	4-18	FLOOR BEAM
41	200X300	4-18	4-18	FLOOR BEAM
42	200X300	4-18	4-18	FLOOR BEAM
43	200X300	4-18	4-18	FLOOR BEAM
44	200X300	4-18	4-18	FLOOR BEAM
45	200X300	4-18	4-18	FLOOR BEAM
46	200X300	4-18	4-18	FLOOR BEAM
47	200X300	4-18	4-18	FLOOR BEAM
48	200X300	4-18	4-18	FLOOR BEAM
49	200X300	4-18	4-18	FLOOR BEAM
50	200X300	4-18	4-18	FLOOR BEAM

SCHEDULE OF BEAM

BEAM NO.	COL. SIZE	REIN. AT SUPPORT	REIN. AT SPAN	REMARKS
BX-1	200X300	4-18	4-18	FLOOR BEAM
BX-2	200X300	4-18	4-18	FLOOR BEAM
BX-3	200X300	4-18	4-18	FLOOR BEAM
BX-4	200X300	4-18	4-18	FLOOR BEAM
BX-5	200X300	4-18	4-18	FLOOR BEAM
BX-6	200X300	4-18	4-18	FLOOR BEAM
BX-7	200X300	4-18	4-18	FLOOR BEAM
BX-8	200X300	4-18	4-18	FLOOR BEAM
BX-9	200X300	4-18	4-18	FLOOR BEAM
BX-10	200X300	4-18	4-18	FLOOR BEAM
BX-11	200X300	4-18	4-18	FLOOR BEAM
BX-12	200X300	4-18	4-18	FLOOR BEAM
BX-13	200X300	4-18	4-18	FLOOR BEAM
BX-14	200X300	4-18	4-18	FLOOR BEAM
BX-15	200X300	4-18	4-18	FLOOR BEAM
BX-16	200X300	4-18	4-18	FLOOR BEAM
BX-17	200X300	4-18	4-18	FLOOR BEAM
BX-18	200X300	4-18	4-18	FLOOR BEAM
BX-19	200X300	4-18	4-18	FLOOR BEAM
BX-20	200X300	4-18	4-18	FLOOR BEAM
BX-21	200X300	4-18	4-18	FLOOR BEAM
BX-22	200X300	4-18	4-18	FLOOR BEAM
BX-23	200X300	4-18	4-18	FLOOR BEAM
BX-24	200X300	4-18	4-18	FLOOR BEAM
BX-25	200X300	4-18	4-18	FLOOR BEAM
BX-26	200X300	4-18	4-18	FLOOR BEAM
BX-27	200X300	4-18	4-18	FLOOR BEAM
BX-28	200X300	4-18	4-18	FLOOR BEAM
BX-29	200X300	4-18	4-18	FLOOR BEAM
BX-30	200X300	4-18	4-18	FLOOR BEAM
BX-31	200X300	4-18	4-18	FLOOR BEAM
BX-32	200X300	4-18	4-18	FLOOR BEAM
BX-33	200X300	4-18	4-18	FLOOR BEAM
BX-34	200X300	4-18	4-18	FLOOR BEAM
BX-35	200X300	4-18	4-18	FLOOR BEAM
BX-36	200X300	4-18	4-18	FLOOR BEAM
BX-37	200X300	4-18	4-18	FLOOR BEAM
BX-38	200X300	4-18	4-18	FLOOR BEAM
BX-39	200X300	4-18	4-18	FLOOR BEAM
BX-40	200X300	4-18	4-18	FLOOR BEAM
BX-41	200X300	4-18	4-18	FLOOR BEAM
BX-42	200X300	4-18	4-18	FLOOR BEAM
BX-43	200X300	4-18	4-18	FLOOR BEAM
BX-44	200X300	4-18	4-18	FLOOR BEAM
BX-45	200X300	4-18	4-18	FLOOR BEAM
BX-46	200X300	4-18	4-18	FLOOR BEAM
BX-47	200X300	4-18	4-18	FLOOR BEAM
BX-48	200X300	4-18	4-18	FLOOR BEAM
BX-49	200X300	4-18	4-18	FLOOR BEAM
BX-50	200X300	4-18	4-18	FLOOR BEAM

SCHEDULE OF SLAB

SLAB NO.	THK (mm)	REIN. AT SUPPORT	REIN. AT SPAN	REMARKS
S1	125	4-18	4-18	FLOOR BEAM
S2	125	4-18	4-18	FLOOR BEAM
S3	125	4-18	4-18	FLOOR BEAM

PILE LAYOUT PLAN
TOTAL NO. OF PILE = 31 Nos.